

Maths Mat

Square Numbers



$$1^2 = 1$$

$$2^2 = 4$$

$$3^2 = 9$$

$$4^2 = 16$$

$$5^2 = 25$$

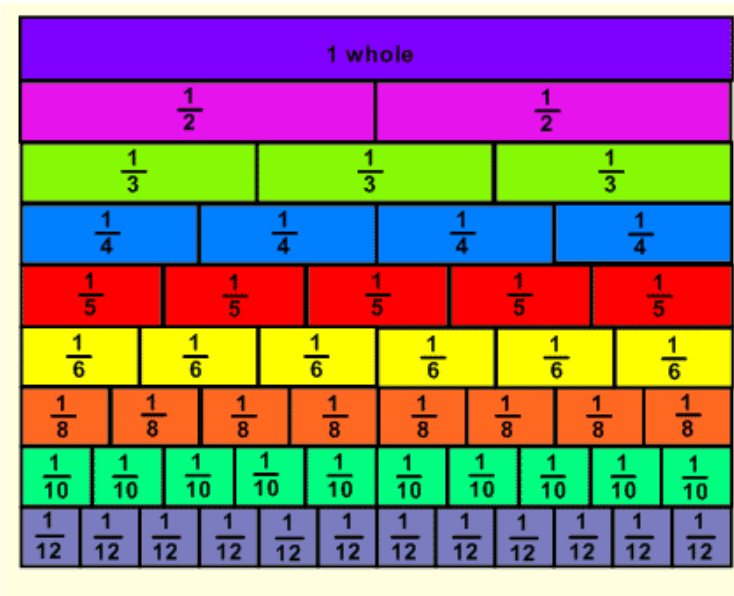
$$6^2 = 36$$

$$7^2 = 49$$

$$8^2 = 64$$

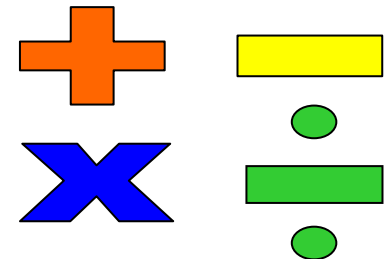
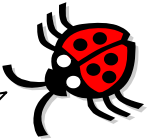
$$9^2 = 81$$

$$10^2 = 100$$



Inverse Operations

The operation that reverses the effect of another operation



Multiplication Square

	1	2	3	4	5	6	7	8	9	10
1	1	2	3	4	5	6	7	8	9	10
2	2	4	6	8	10	12	14	16	18	20
3	3	6	9	12	15	18	21	24	27	30
4	4	8	12	16	20	24	28	32	36	40
5	5	10	15	20	25	30	35	40	45	50
6	6	12	18	24	30	36	42	48	54	60
7	7	14	21	28	35	42	49	56	63	70
8	8	16	24	32	40	48	56	64	72	80
9	9	18	27	36	45	54	63	72	81	90
10	10	20	30	40	50	60	70	80	90	100

Fraction	Decimal	Percentage
1	1	100%
1/2	0.5	50%
1/4	0.25	25%
3/4	0.75	75%
1/10	0.1	10%
1/5	0.2	20%
1/3	0.3	33.33%
2/3	0.6	66.67%

Equivalent fractions, decimals and percentages

< means "less than"
> means "more than"



Dividing

Move digits to the right

- once when dividing by 10
- twice for 100 and
- three times for 1000.

Multiplying

Move digits to the left

- once when X10,
- twice when X100 and
- three times when X1000.

